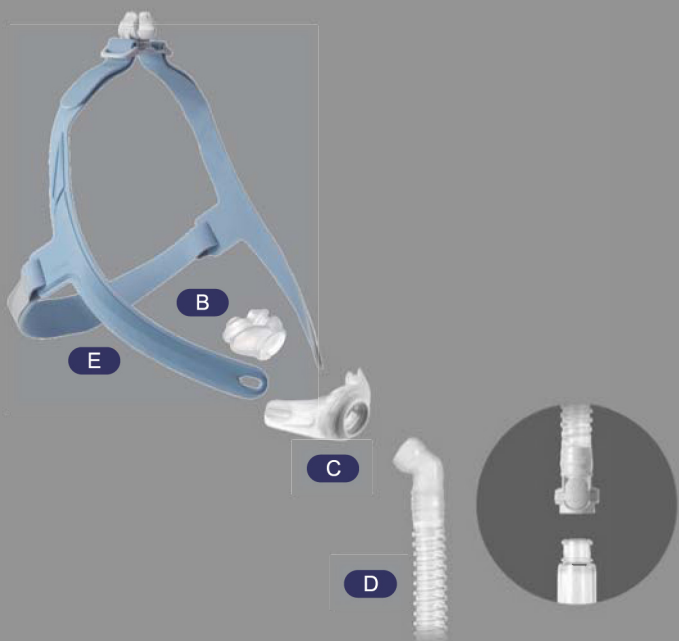




A Mr. WIZARD 230 Nasal Pillows Mask



Mr. WIZARD 230

Nasal Pillows Mask Instructions For Use



Reorder Information

Item	REF No.	Description (English / Español / Português / Français / Deutsch / Nederlands / Italiano)
A	SM03001	Mr. WIZARD 230 Nasal Pillows Mask / Mascarilla nasal Mr. WIZARD 230 para hombre / Máscara de Almofadas Nasais Mr. WIZARD 230 / M. WIZARD 230 Masque Narinaire / Mr. WIZARD 230 Nasenpolster-Maske / Mr. WIZARD 230 Intranasaal neusmasker / Maschera con cuscinetti nasali da uomo WIZARD 230
B	SM00017	L Nasal Pillows Cushion / Almohadilla nasal acolchada tamaño L (grande) / Almofada Nasal Grande / L. Coussinet de Masque Narinaire / Nasenpolster Größe L / L Neuskussentje / Cuscinetto nasale L
	SM00018	M Nasal Pillows Cushion / Almohadilla nasal acolchada tamaño M (mediano) / Almofada Nasal Média / M. Coussinet de Masque Narinaire / Nasenpolster Größe M / M Neuskussentje / Cuscinetto nasale M
	SM00019	S Nasal Pillows Cushion / Almohadilla nasal acolchada tamaño S (pequeño) / Almofada Nasal Pequena / S. Coussinet de Masque Narinaire / Nasenpolster Größe S / S Neuskussentje / Cuscinetto nasale S
C	SM00021	Mask Frame / Armazón de la mascarilla / Armação da Máscara / Cadre de Masque / Masken-Rahmen / Maskerframe / Telaio della maschera
D	SM00022	Elbow Connector with Short Tube / Conector angular con tubo corto / Cotovelo com Junta Esférica / Raccord coudé avec Tube Court / Winkel-Adapter mit kurzem Schlauch / Elleboogaansluiting met korte buis / Gomito a sfera con tubo corto
E	SM00024	Headgear Set, Light Blue / Correias de sujeción para la cabeza, color azul claro / Correias, Azul-Bebé / Sangle de Fixation, Bleu clair / Kopfband-Set, Hellblau / Set voor hoofdgareel, Lichtblauw / Copricapo, azzurro



Please read the instruction manual before use.



APEX MEDICAL CORP.
No. 9, Min Sheng St., Tu-Cheng,
New Taipei City, 23679, Taiwan



APEX MEDICAL S.L.
Elcano 9, 6ª planta
48008 Bilbao, Vizcaya, Spain

APEX MEDICAL USA CORP.
615 N. Berry St. Suite D, Brea,
CA 92821, USA

www.apexbrand.com

Print-2012/All rights reserved
686004-0000 V1.2



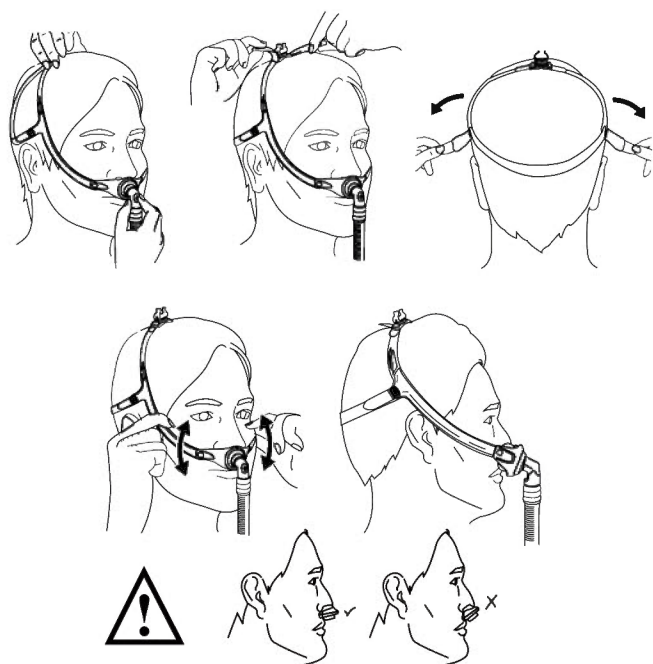
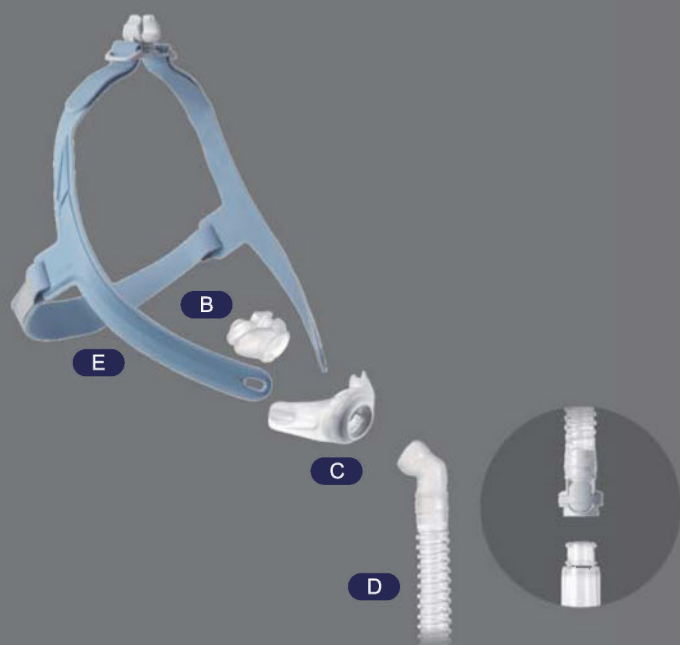
A Mr. WIZARD 230 Nasal Pillows Mask

Fig 1

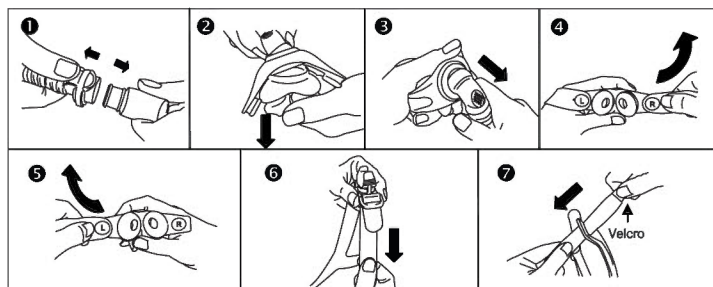


Fig 2

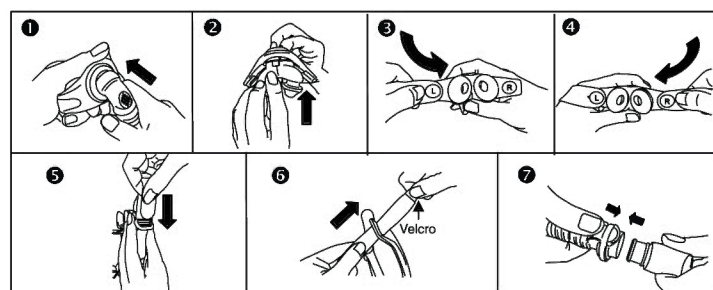


Fig 3

WIZARD 230 Exhaust Flow

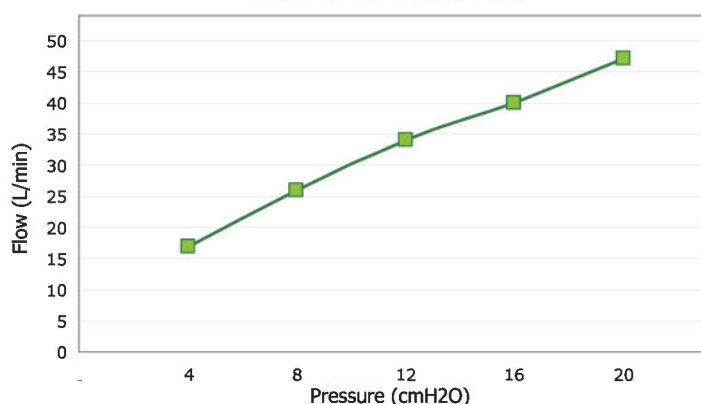


Fig 4

Intended Use

The WIZARD 230 Nasal Pillows Mask is intended for use in the home environment, hospitals and care facilities by adult patients (more than 30 kg) for whom positive airway pressure (CPAP or bi-level system) has been prescribed.

Warnings

- The vent holes must be kept clear.
- Follow all precautions when using supplemental oxygen. Oxygen flow must be turned off when the flow generator is not operating.
- Use your mask as prescribed by your physician. It should be used only together with the appropriate flow generator equipment (CPAP or bi-level device) to ensure optimum therapy.
- Contact a health care professional if you experience ANY adverse reaction to the use of the mask.

Symbols

Caution	Consult instructions for use
Reference number	Lot number
Date of manufacture	Use by
Temperature limitation	Humidity limitation
Does not contain latex	Medical prescriptions
Manufacturer	Authorized representative in the European Community

Before Use

- Read the instructions completely.
- Remove plastic cover from the silicon pillows.
- Hand-wash the mask.
- Inspect the mask for damage or wear. Do not use if damaged.

Fitting the Mask (Fig 1)

1. Ensure your nasal pillows mask is in correct position. On the right headgear strap the logo WIZARD should be visible.
2. Insert the silicon pillows into the nostrils and pull the headgear over the head.
3. Adjust the side straps to a comfortable fit. The side straps should run between the ear and the eye.
4. Adjust the back strap to a comfortable fit. The pillows should sit snugly and soft in the nostrils.
5. If you prefer to fix the tube over your head, use the tube retainer buckle on top of the headgear.
6. Connect the swivel with the tubing and the flow generator (CPAP or bi-level machine) and turn on the airflow.
7. If necessary, adjust the headgear to eliminate any leaks without over-tightening the straps. If leaks still occur, change your silicon pillows size (three sizes are provided: S, M, L) .

Cleaning the Mask in the Home Environment (Fig 2)

- Detach the swivel from the short tube. (1)
- Remove the silicon pillows (2) , ball elbow with short tube (3) and the headgear straps (4,5) from the mask frame.
- Detach all the headgear straps (6,7) , including the left, the right and the back headgear strap.
- Hand-wash all parts with mild soap or diluted dishwashing detergent and warm water (ca. 30°C). Remove all facial oils from the cushion. Use a bristle brush to clean the air vents and silicon pillows.
- Rinse all parts thoroughly.
- Leave to air dry before re-assembling.

Do not use bleach, chlorine, alcohol, scented oils or aromatic based solutions. These solutions may damage the mask, cause cracks and reduce the life of the product. Do not iron the headgear.

Reprocessing the Mask between Patients

Your mask provider can give you further instructions for cleaning and disinfection procedures in hospitals and care facilities for multi-patient use.

Assembling the Mask (Fig 3)

- Put the ball elbow with the short tube into the mask frame (1) and insert the silicon pillows into the mask frame (2) .
- Attach the right headgear (4) strap with the logo WIZARD to the right side of the mask frame and the left headgear strap to the left side (3) .
- Thread the left and right headgear straps (5) through the top buckle.
- Thread the back strap (6) through the left and right straps and ensure the Velcro is outside.
- Connect the swivel with the short tube (7) .

Technical Specifications

Note: The mask system does not contain latex, PVC or DEHP materials.

Exhaust Flow

The mask has vent holes to flush out the exhaled air and ensure that fresh air is inhaled.

Pressure (cmH ₂ O)	4	8	12	16	20
Flow (L/Min)	17	26	34	40	47

Refer the Pressure-Flow Curve to Fig 4 on the front page.

Mask Dead Space

100 ml

Therapy Pressure Range

4-20 cmH₂O

Resistance (pressure drop)

at 50 l/min: 0.5 cm/H₂O at 100 l/min: 1.7 cm/H₂O

Operating Range

+5°C to +35°C (+41°F to +95°F)
15% to 95% relative humidity non condensing

Storage and transport

-15°C to +60°C (+5°F to +140°F)
10% to 90% relative humidity non condensing
Store the mask in a dry place out of direct sunlight.

Disposal

Your mask does not contain any hazardous substance and may be disposed of with your normal household waste.